

NEIGHBOUR- HOOD.

NEIGHBOURHOOD.

At Neighbourhood we aim to create a welcoming and diverse community with the considered and sustainable design of our homes.



WELCOME

TO

NEIGHBOUR- HOOD.

Neighbourhood is a welcoming and diverse community of sustainably designed homes. A collection of ninety-five three-bedroom homes, contemporary in design, each one is built to a high specification.

Sustainable features include electric car charging points, low energy and light infused spaces and bike storage. With green credentials, fully landscaped areas and private roof terraces.

Neighbourhood offers a new green community space within an urban location for family and friends to enjoy.



HELLO SALFORD ...



GREAT COMMUNITY

When walking your dog, cycling or jogging through the park, take comfort in the feeling of belonging in your neighbourhood.

GREAT CONNECTIONS

Trams, buses and motorway links close by your doorstep open the gateway to Salford Quays, Manchester city centre and beyond.

A five-minute walk to your nearest tram stop opens up fast access to the cities of Salford and Manchester whenever you need it.

GREAT SCHOOLS

Schools, colleges and universities make high standards of education available for all ages in your immediate locality. From nurseries and pre-school to academies to sixth-form college and university, children and adults have easy access to their chosen path of learning from nearby Neighbourhood.

**NEIGHBOUR-
HOOD.**

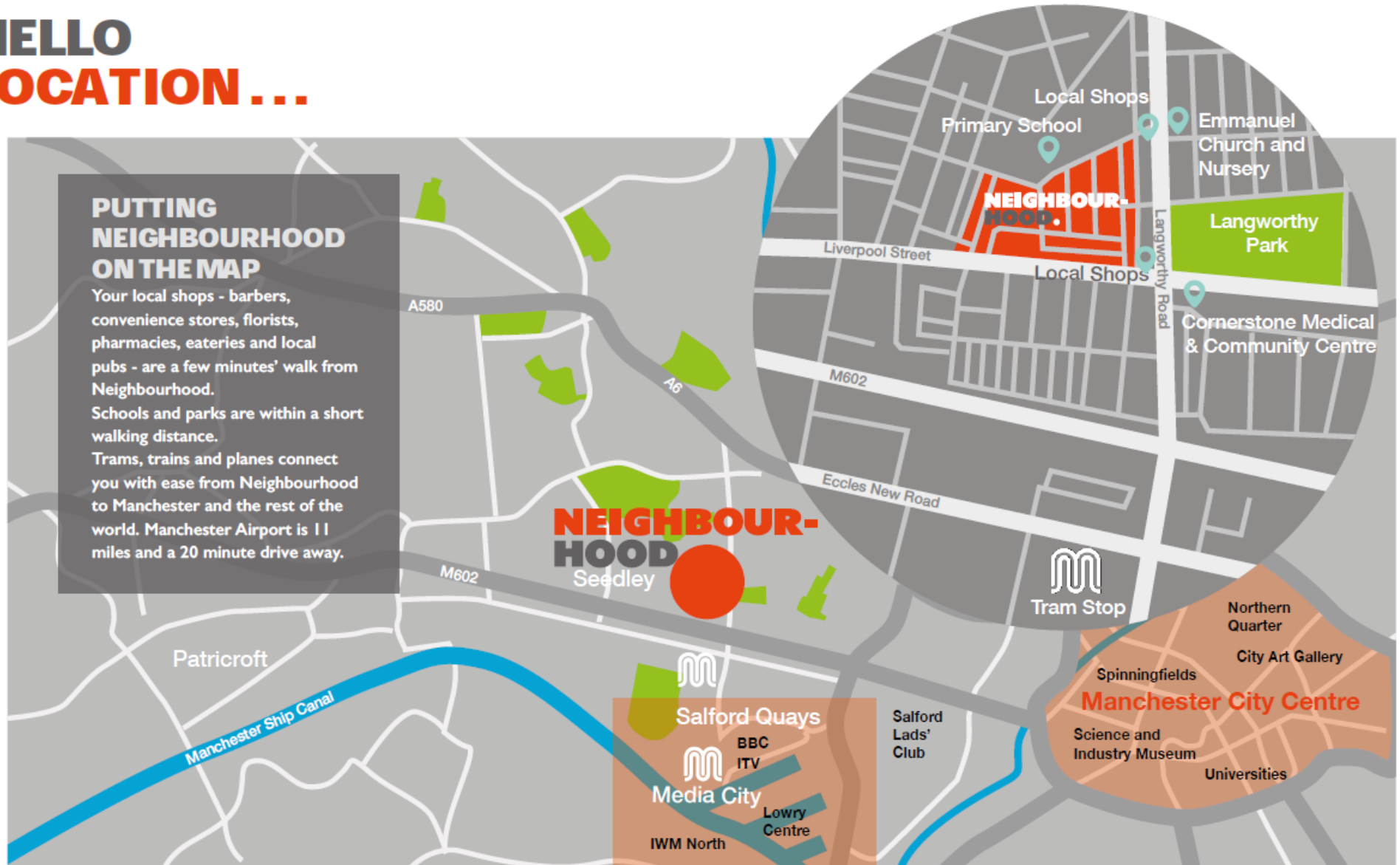
HELLO LOCATION...

PUTTING NEIGHBOURHOOD ON THE MAP

Your local shops - barbers, convenience stores, florists, pharmacies, eateries and local pubs - are a few minutes' walk from Neighbourhood.

Schools and parks are within a short walking distance.

Trams, trains and planes connect you with ease from Neighbourhood to Manchester and the rest of the world. Manchester Airport is 11 miles and a 20 minute drive away.



**NEIGHBOUR-
HOOD.**

HELLO MASTERPLAN...

NEIGHBOURHOOD

The four types of home and their layout.

TYPE A



TYPE B



TYPE C



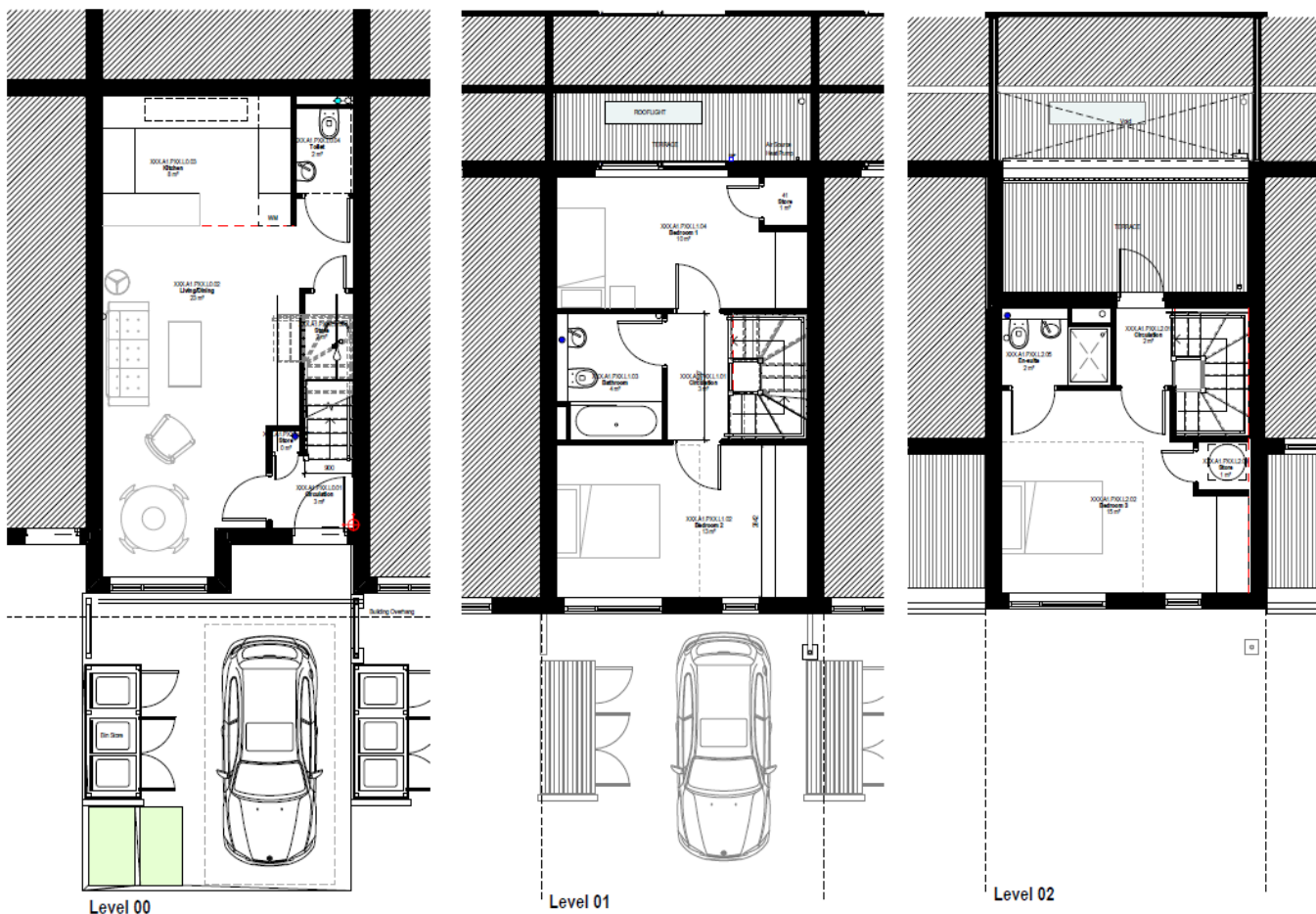
TYPE D



**NEIGHBOUR-
HOOD.**

HELLO TYPE A...

(Rear Terrace on level 2 – Plots 63, 65, 67, 69, 75, 77, 79 & 81)



(2-) Room Schedule			
RM_Building Type	Level	Name	Area

Not Placed

House Type A1	Not Placed	utility	Not Placed
---------------	------------	---------	------------

Level 00

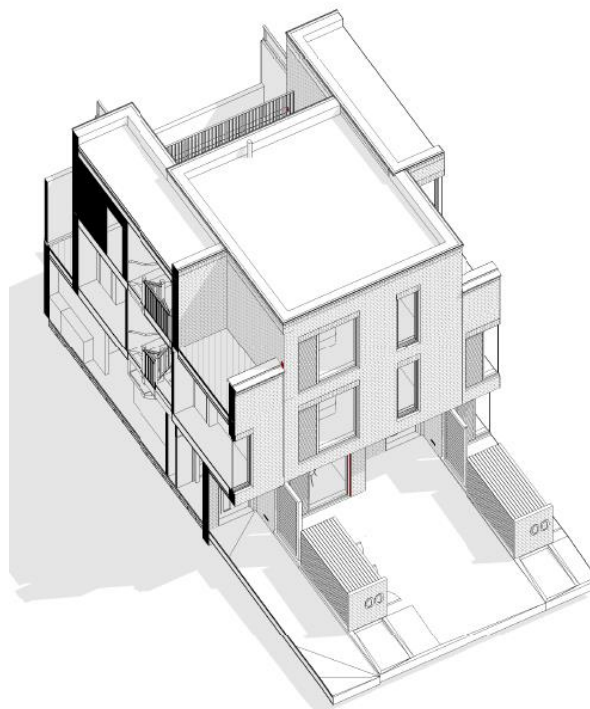
House Type A1	Level 00	Kitchen	8 m ²
House Type A1	Level 00	Living/Dining	23 m ²
House Type A1	Level 00	Toilet	2 m ²
House Type A1	Level 00	Store	2 m ²
House Type A1	Level 00	Circulation	3 m ²
House Type C1	Level 00	Store	0 m ²

Level 01

House Type A1	Level 01	Bedroom 1	10 m ²
House Type A1	Level 01	Bedroom 2	13 m ²
House Type A1	Level 01	Circulation	3 m ²
House Type A1	Level 01	Bathroom	4 m ²
House Type A1	Level 01	Store	Redundant Room
House Type A1	Level 01	Store	1 m ²
House Type A4	Level 01	Store	Redundant Room

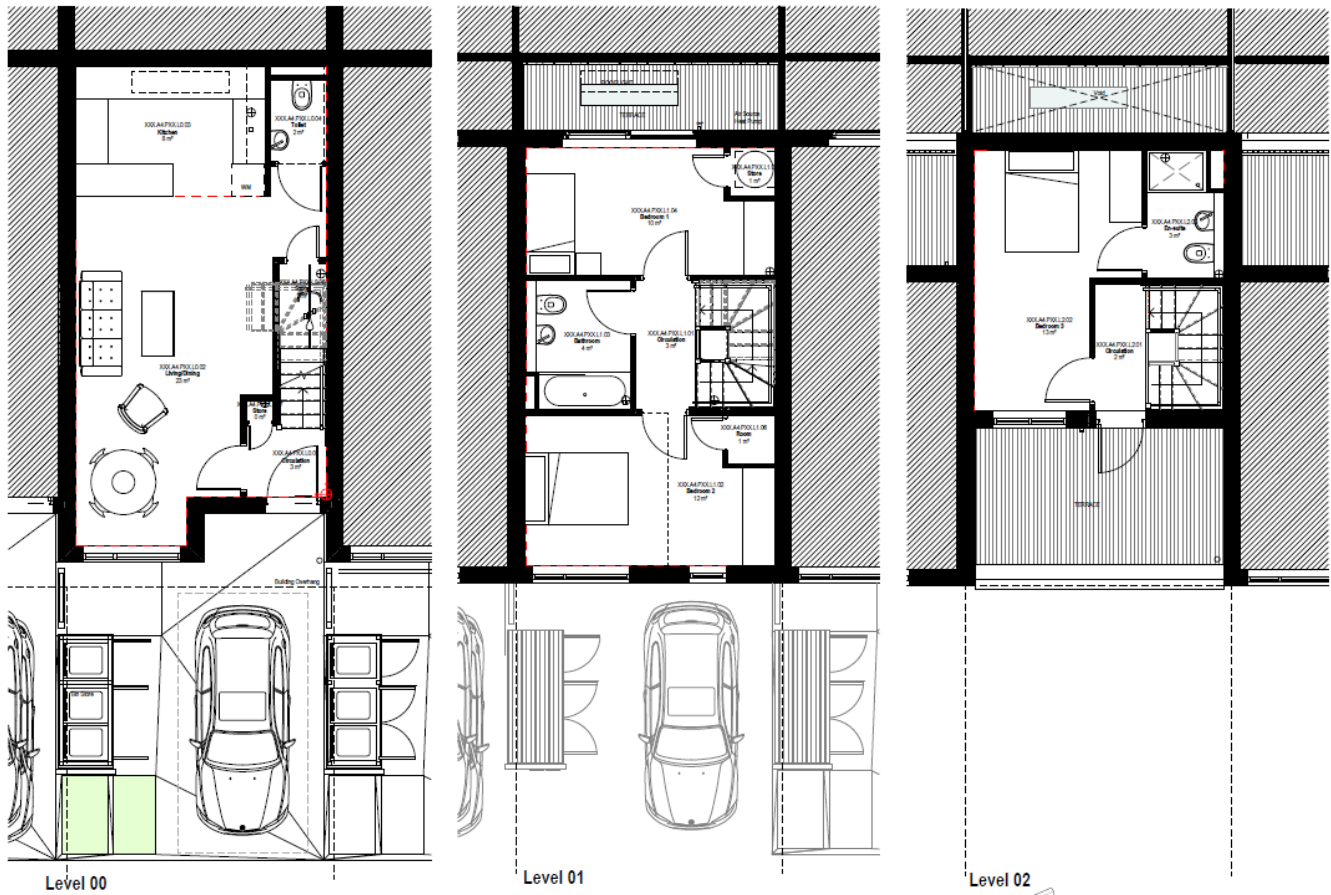
Level 02

House Type A1	Level 02	Bedroom 3	15 m ²
House Type A1	Level 02	Circulation	2 m ²
House Type C1	Level 02	Store	1 m ²
House Type A1	Level 02	En-suite	2 m ²



HELLO TYPE A...

(Front terrace on level 2 – Plots 64, 66, 68, 70, 76, 78, 80 & 82)



(2-) Room Schedule			
RM_Building Type	Level	Name	Area

Level 00

House Type A4	Level 00	Kitchen	8 m ²
House Type A4	Level 00	Living/Dining	23 m ²
House Type A4	Level 00	Toilet	2 m ²
House Type A4	Level 00	Store	2 m ²
House Type A4	Level 00	Circulation	3 m ²
House Type A4	Level 00	Store	0 m ²

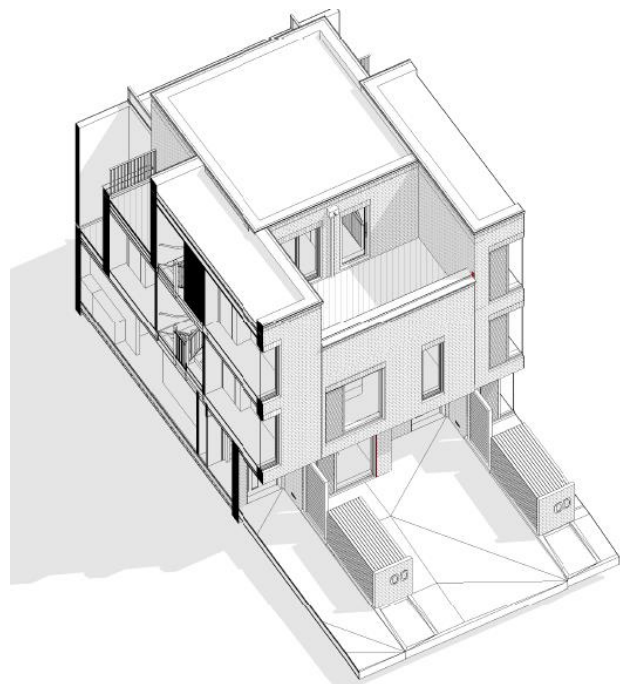
Level 01

House Type A4	Level 01	Bedroom 1	10 m ²
House Type A4	Level 01	Bedroom 2	12 m ²
House Type A4	Level 01	Circulation	3 m ²
House Type A4	Level 01	Bathroom	4 m ²
House Type A4	Level 01	Store	1 m ²
House Type A4	Level 01	Room	1 m ²

Level 02

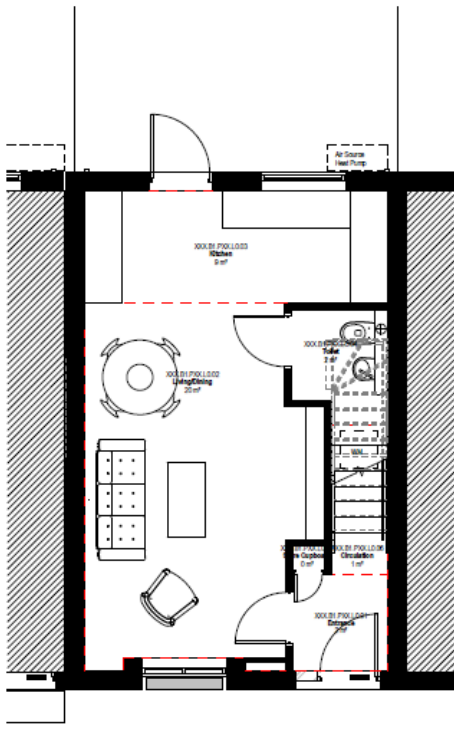
House Type A4	Level 02	En-suite	3 m ²
House Type A4	Level 02	Bedroom 3	13 m ²
House Type A4	Level 02	Circulation	2 m ²

86 m²

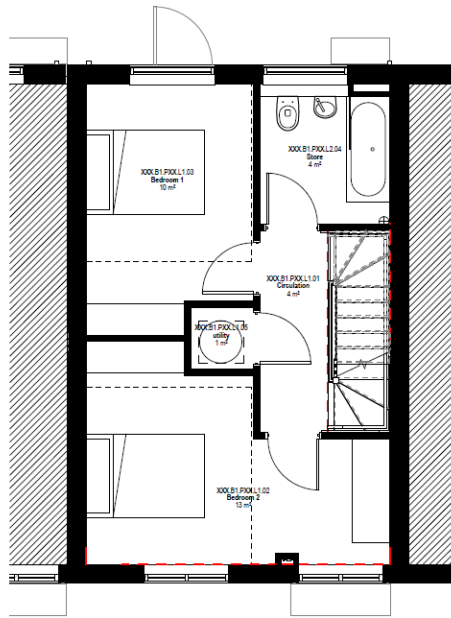


HELLO TYPE B...

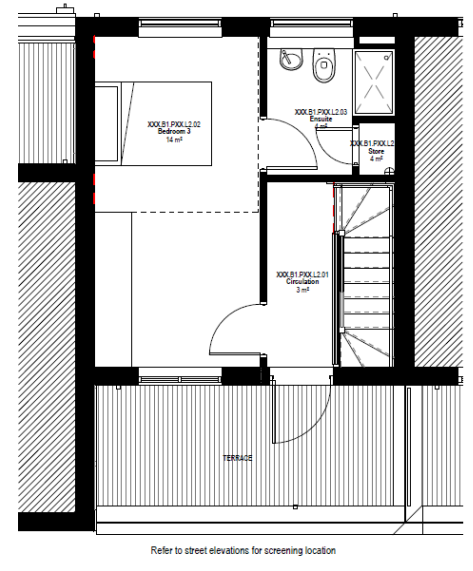
(Plots 89, 90 & 91)



Level 00



Level 01



Level 02

Refer to street elevations for screening location

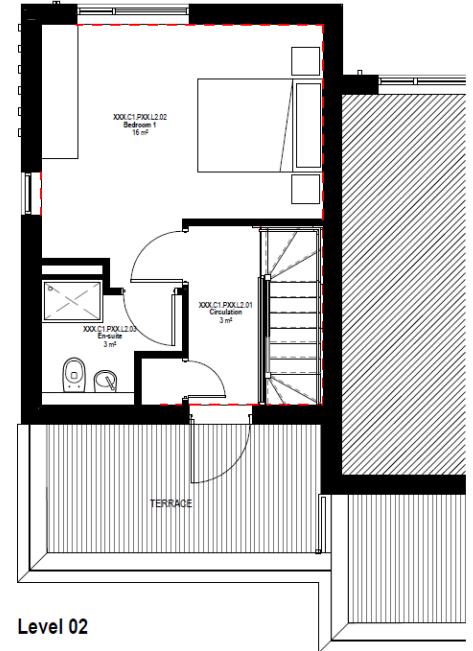
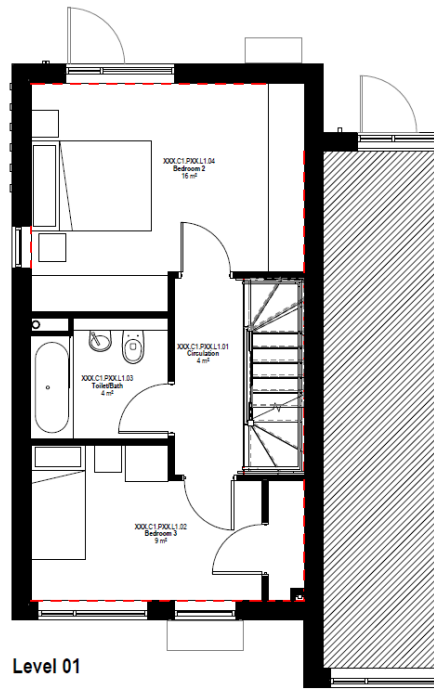
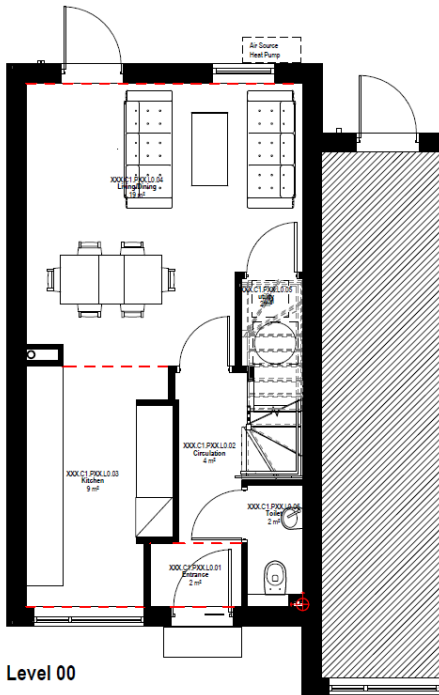
(2-) Room Schedule			
RM_Building Type	Level	Name	Area
Level 00			
House Type B1	Level 00	Living/Dining	20 m ²
House Type B1	Level 00	Toilet	2 m ²
House Type B1	Level 00	Circulation	1 m ²
House Type B1	Level 00	Kitchen	9 m ²
House Type B1	Level 00	Utility	1 m ²
House Type B1	Level 00	Entrance	2 m ²
House Type B1	Level 00	Store Cupboard	0 m ²
Level 01			
House Type B1	Level 01	Store	4 m ²
House Type B1	Level 01	Circulation	4 m ²
House Type B1	Level 01	Bedroom 1	10 m ²
House Type B1	Level 01	Bedroom 2	13 m ²
House Type B1	Level 01	utility	1 m ²
Level 02			
House Type B1	Level 02	Bedroom 3	14 m ²
House Type B1	Level 02	Circulation	3 m ²
House Type B1	Level 02	Ensuite	4 m ²
			89 m ²



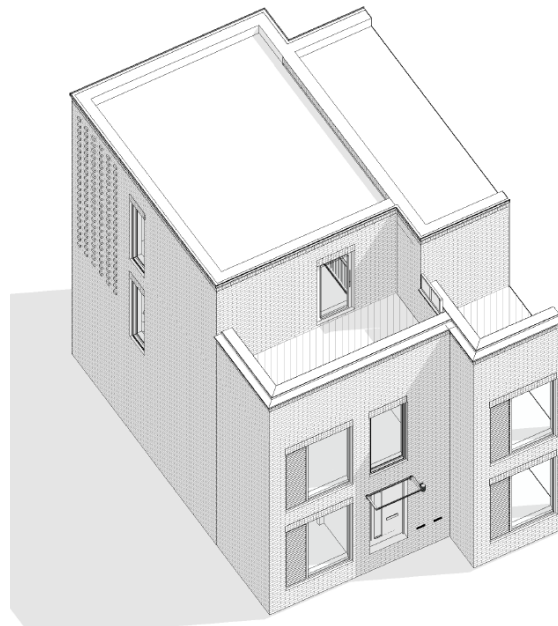
Level 03 - Axo Plan

HELLO TYPE C...

(Plots 83, 84, 85, 86, 87 & 88)

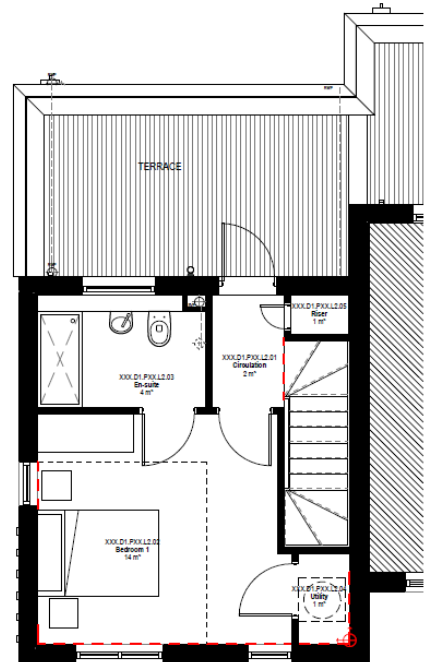
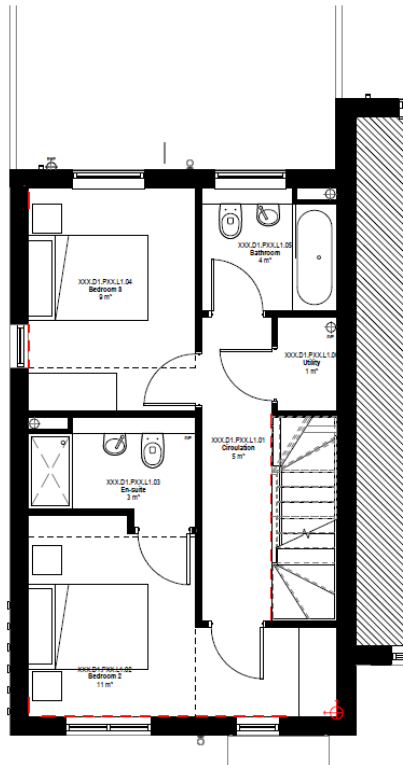
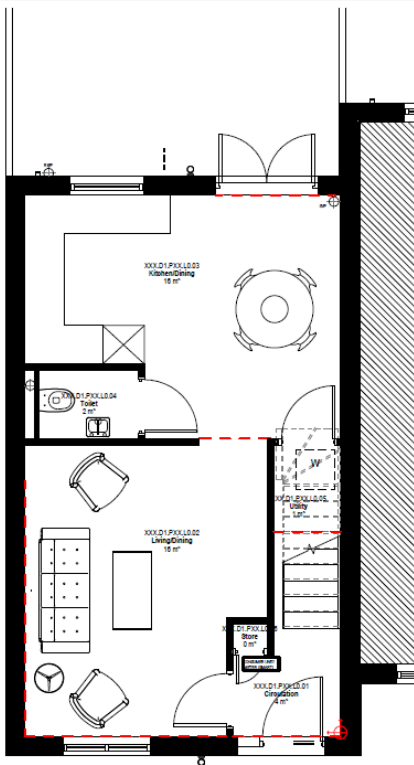


Room Schedule 2			
RM_Building Type	Level	Name	Area
House Type C1			
House Type C1	Level 00	Circulation	4 m ²
House Type C1	Level 00	Toilet	2 m ²
House Type C1	Level 00	Living/Dining	19 m ²
House Type C1	Level 00	utility	2 m ²
House Type C1	Level 00	Kitchen	9 m ²
House Type C1	Level 00	Entrance	2 m ²
Level 00: 6			37 m ²
House Type C1	Level 01	Toilet/Bath	4 m ²
House Type C1	Level 01	Bedroom 3	9 m ²
House Type C1	Level 01	Circulation	4 m ²
House Type C1	Level 01	Bedroom 2	16 m ²
House Type C1	Level 01	Store	1 m ²
Level 01: 5			34 m ²
House Type C1	Level 02	Bedroom 1	16 m ²
House Type C1	Level 02	Circulation	3 m ²
House Type C1	Level 02	En-suite	3 m ²
House Type C1	Level 02	Store	0 m ²
Level 02: 4			23 m ²
House Type C1: 15			94 m ²
Grand total: 15			94 m ²



HELLO TYPE D...

(Plots 71, 72, 73 & 74)

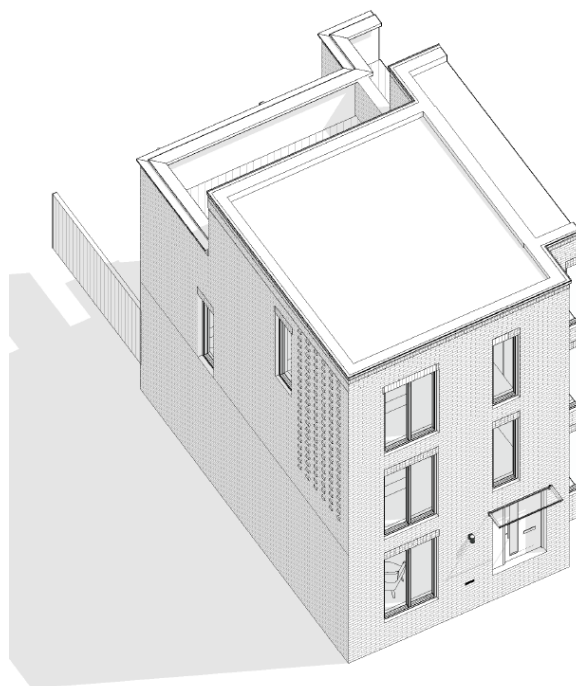


Level 00

Level 01

Level 02

(2-) Room Schedule			
RM_Building Type	Level	Name	Area
Level 00			
House Type D1	Level 00	Living/Dining	16 m ²
House Type D1	Level 00	Kitchen/Dining	16 m ²
House Type D1	Level 00	Circulation	4 m ²
House Type D1	Level 00	Toilet	2 m ²
House Type D1	Level 00	Utility	1 m ²
House Type D1	Level 00	Store	0 m ²
Level 01			
House Type D1	Level 01	Bedroom 3	9 m ²
House Type D1	Level 01	Bathroom	4 m ²
House Type D1	Level 01	Utility	1 m ²
House Type D1	Level 01	Bedroom 2	11 m ²
House Type D1	Level 01	En-suite	3 m ²
House Type D1	Level 01	Circulation	5 m ²
Level 02			
House Type D1	Level 02	Riser	1 m ²
House Type D1	Level 02	Utility	1 m ²
House Type D1	Level 02	En-suite	4 m ²
House Type D1	Level 02	Bedroom 1	14 m ²
House Type D1	Level 02	Circulation	2 m ²
			95 m ²



HELLO COMMUNITY ...



KNOW NO LIMITS



Nearby sporting and social venues offer the perfect places to meet friends and make friends.



A place to call home is about communities, lifestyles, technology and green space existing harmoniously together.

**NEIGHBOUR-
HOOD.**

HELLO FAMILY...

NEW VISION



Perfect for families starting out and moving up. Local amenities for families include a park, community space, nursery and primary school.

Dogs are welcome on this pet-friendly development with surrounding parks and community space.



**NEIGHBOUR-
HOOD.**

HELLO NEW HOME...

GET IN TOUCH

To reserve your new home please contact a friendly member of the Willo Homes team today!

Willo
HOMES

0161 537 3123

neighbourhood@willohomes.co.uk

A PARTNERSHIP BETWEEN

stepplaces

salix homes

**NEIGHBOUR-
HOOD.**

CONSUMER
CODE FOR
HOME BUILDERS
www.consumercode.co.uk


APPROVED CODE
TRADING STANDARDS UK


HBFB
HOME BUILDERS FEDERATION



SALFORD KEYS | Tony Walsh

It's built of more than red bricks and it's built of more than slate
It's built of more than gone-befores that make a city great
It's built of more than great names and the glories of the past
It is built of future stories if it's glory's built to last!

It is built of Salford spirit, which, though thirty miles inland
Built a dock whose stock showed those who'd mocked and made them understand
That this city and its people and its energy and skills
Will change, adapt, and graft and craft and build; re-skilled, re-build

So when the world moved on, the docks were gone, this city built a plan
Building this and this and this, now this. "We're Salford and we can!"
And it's built of strong connections; round the world, through streets like these
Where it's hardwired in communities that these are Salford's keys...

Innovation, co-creation; trade and tech and sport here
Remix the bricks, attract and act with those who dock and port here
And then rise again, surprise again; hold firm on bold decisions
That will build a city's future from a city's bold new vision!

And it's built of more than glass and steel, it's built of more than slogans
It's built of sparks. The art and heart of people, those who know them
Know they feel the spirit's real here, there is... something... in the air here
Know that Salford spirit knows no limits; summat that we share here

Is the strength that made the history, and the strength that laid the bricks
Is the strength to build tomorrow from a city built of this!
Build it cleaner, build it greener; building hope and building dreams
Build conditions for ambition 'til it's bursting at the seams

Building neighbourhoods, communities; build lives from seedlings sown here
Build families. Build memories. Build futures. Build a home here.

©Tony Walsh | Longfella Ltd 2021 | All rights reserved

NEIGHBOUR-
HOOD.